



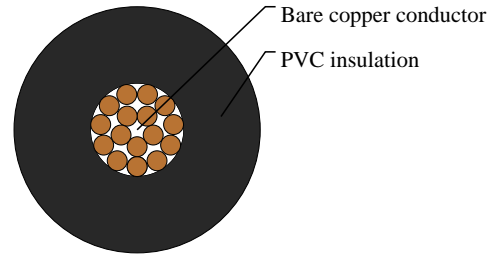
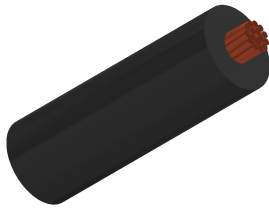
# Caledonian

Industrial Cables to British Standard

[www.caledonian-cables.com](http://www.caledonian-cables.com)

[marketing@caledonian-cables.com](mailto:marketing@caledonian-cables.com)

## Tri-rated Cable to BS6231



### APPLICATIONS

Tri-rated Cable panel wiring is a high temperature, flame retardant cable designed for use in the switch control, relay and instrumentation panels of power switchgear and for purposes such as internal connectors in rectifier equipment, motor starters and controllers. Tri-rated Cable is sometimes referred to as BS6231 Cable or Panel Wire.

### VOLTAGE RATING

600/1000V

### CABLE CONSTRUCTION

- Fine bare copper strands
- Stranding to IEC 60228 CL-5
- PVC T11(for type BK), T13 (for type CK) core insulation

### COLOUR CODE

Black, Blue, Brown, Red, White, Yellow, Grey, Violet, Pink, Green/Yellow, Other colours are available on request

### PHYSICAL AND THERMAL PROPERTIES

- Minimum bending radius: 6xOverall diameter
- Operating temperature: 0° C to +70° C(for type BK)  
0° C to +90° C(for type CK)
- Flame retardant: IEC 60332.1
- Insulation resistance: 20 MΩxkm

### DIMENSION AND PARAMETERS

No. of Cores × Cross-sectional Area	AWG Size	Nominal Insulation Thickness	Approx. Overall Diameter	Approx. Weight
No. ×mm <sup>2</sup>		mm	mm	kg/km
1x0.5	20(16/32)	0.8	2.5	12